



**India Meteorological Department  
(Ministry of Earth Sciences)**

**NATIONAL BULLETIN NO. 10 (LAND/02/2024)**

**TIME OF ISSUE: 0230 HOURS IST**

**DATED: 27.08.2024**

**FROM: INDIA METEOROLOGICAL DEPARTMENT (FAX NO. 24643965/24699216/24623220)**

**TO: CONTROL ROOM, NDM, MINISTRY OF HOME AFFAIRS (FAX.NO. 23093750)**

**CONTROL ROOM NDMA (FAX.NO. 26701729)**

**CABINET SECRETARIAT (FAX.NO.23012284, 23018638)**

**PS TO HON'BLE MINISTER FOR S & T AND EARTH SCIENCES (FAX NO.23316745)**

**SECRETARY, MOES (FAX NO. 24629777)**

**H.Q. (INTEGRATED DEFENCE STAFF AND CDS) (FAX NO. 23005137/23005147)**

**DIRECTOR GENERAL, DOORDARSHAN (23385843)**

**DIRECTOR GENERAL, AIR (23421105, 23421219)**

**PIB MOES (FAX NO. 23389042)**

**UNI (FAX NO. 23355841)**

**D.G. NATIONAL DISASTER RESPONSE FORCE (NDRF) (FAX NO. 26105912, 2436 3260)**

**DIRECTOR, PUNCTUALITY, INDIAN RAILWAYS (FAX NO. 23388503)**

**CHIEF SECRETARY, ODISHA (FAX NO. 0674-2536660)**

**CHIEF SECRETARY, WEST BENGAL (FAX NO. 033-22144328)**

**CHIEF SECRETARY, JHARKHAND (FAX NO. 0651-2400255)**

**CHIEF SECRETARY, BIHAR (FAX NO. 0612-2217085)**

**CHIEF SECRETARY, MADHYA PRADESH (FAX NO. 0755-2441076)**

**CHIEF SECRETARY, RAJASHTHAN (FAX NO. 0141-2227114)**

**CHIEF SECRETARY, MAHARASHTRA (FAX NO. 022- 22028594)**

**CHIEF SECRETARY, GUJARAT (FAX NO. 079-23250305)**

**CHIEF SECRETARY, DAMAN & DIU (FAX NO. 0260-2230775)**

**CHIEF SECRETARY, DADRA & NAGAR HAVELI (FAX NO. 0260-2645466)**

**CHIEF SECRETARY, GOA (FAX NO. 0832-2415201)**

**Sub: (a) Deep Depression over north Gujarat**

The deep depression over north Gujarat and adjoining southeast Rajasthan moved nearly westwards with a speed of 10 kmph during past 6 hours and lay centered at 2330 hours IST of yesterday, the 26<sup>th</sup> August over North Gujarat near latitude 23.8°N and longitude 72.4 °E, close to Patan, about 70 km south-southeast of Deesa (Gujarat), 80 km north-northwest of Ahmedabad (Gujarat), 140 km northeast of Surendranagar (Gujarat) and 270 km east-northeast of Bhuj (Gujarat).

It is likely to continue to move slowly west-southwestwards across Gujarat region and reach Saurashtra & Kutch coast and adjoining areas of Pakistan and northeast Arabian Sea by morning of 29<sup>th</sup> August.

**(b) Well Marked Low Pressure Area over Jharkhand and Neighbourhood**

The well marked low pressure area over Gangetic West Bengal and adjoining Jharkhand moved west-northwestwards and lay over Jharkhand and neighbourhood at 2330 hours IST of yesterday, the 26<sup>th</sup> August 2024. It is likely to move west-northwestwards across Jharkhand, and north Chhattisgarh & adjoining southeast Uttar Pradesh during next 2 days.

## **Warnings:**

### **(i) Rainfall Warning:**

**West Madhya Pradesh:** Light to moderate rainfall at most places with heavy rainfall at isolated places over West Madhya Pradesh is very likely on 27<sup>th</sup> August.

**South Rajasthan:** Light to moderate rainfall at most places with heavy to very heavy rainfall at isolated places over South Rajasthan is very likely on 27<sup>th</sup> August.

### **Gujarat State:**

**(a) North Gujarat region:** Light to moderate rainfall at most places heavy to very heavy rainfall at isolated places over North Gujarat on 27<sup>th</sup> August and heavy rainfall at isolated places on 28<sup>th</sup> August.

**(b) South Gujarat Region and Saurashtra & Kutch:** Light to moderate rainfall at most places with heavy to very heavy rainfall at a few places and extremely heavy rainfall at isolated places is likely on 27<sup>th</sup> August; heavy to very heavy rainfall at isolated places is likely on 28<sup>th</sup> & 29<sup>th</sup> August and heavy rainfall at isolated places on 30<sup>th</sup> August.

**Konkan & Goa:** Light to moderate rainfall at most places with isolated heavy rainfall on 27<sup>th</sup> & 28<sup>th</sup> August.

**Madhya Maharashtra:** Light to moderate rainfall at most places with heavy rainfall at isolated places is likely on 27<sup>th</sup> & 28<sup>th</sup> August.

**Odisha:** Light to moderate rainfall at most places with heavy rainfall at isolated places is likely during 27<sup>th</sup> to 28<sup>th</sup> August.

**Gangetic West Bengal:** Light to moderate rainfall at most places with heavy rainfall at isolated places is likely on 27<sup>th</sup> August.

**Jharkhand:** Light to moderate rainfall at many places with heavy rainfall at isolated places is likely on 27<sup>th</sup> & 28<sup>th</sup> August.

**Bihar:** Light to moderate rainfall at many places with heavy rainfall at isolated places is likely during 27<sup>th</sup> to 28<sup>th</sup> August.

### **(ii) Wind warning:**

- Strong surface wind speed reaching 40-50 kmph gusting to 60 kmph is very likely to prevail over South Rajasthan on 27<sup>th</sup> August.
- Strong surface wind speed reaching 40-50 kmph gusting to 60 kmph is very likely over the districts of North Gujarat region on 27<sup>th</sup> August; Squally wind speed reaching 45-55 kmph gusting to 65 kmph is likely over the districts of South Gujarat Region and Saurashtra & Kutch during 27<sup>th</sup>-29<sup>th</sup> August.
- Squally wind speed reaching 55-65 kmph gusting to 75 kmph is likely to prevail along & off Gujarat coasts & adjoining Pakistan coasts and northeast and adjoining eastcentral Arabian Sea during 27<sup>th</sup>-30<sup>th</sup> August.
- Squally wind speed reaching 40-50 kmph gusting to 60 kmph is likely to prevail along and off north Maharashtra coasts on 27- 29<sup>th</sup> August.

**(iii) Sea condition:**

- Squally weather with Rough to very Rough sea conditions is very likely to prevail along & off Gujarat & adjoining Pakistan and north Maharashtra Coasts and Northeast & adjoining Eastcentral Arabian Sea till 30<sup>th</sup> August.

**(iv) Fisherman warning:**

- Fishermen are advised not venture into Northeast & adjoining Eastcentral Arabian Sea and along & off Gujarat & adjoining Pakistan and north Maharashtra Coasts till 30<sup>th</sup> August.

**(v) Advisory for offshore/onshore Exploration and Production (E & P) Operators:**

The small ships and offshore -onshore E & P operators, shipping and port authorities along & off Gujarat & north Maharashtra Coasts and Northeast & adjoining Eastcentral Arabian Sea are advised to keep watch on developing weather and take necessary actions.

**(vi) Impact Expected**

- Localized Flooding of roads, water logging in low lying areas and closure of underpasses mainly in urban areas of the above region.
- Occasional reduction in visibility due to heavy rainfall.
- Reduction of visibility over sea area due to sea spray induced by strong wind and heavy rainfall.
- Disruption of traffic in major cities due to water logging in roads leading to increased travel time.
- Minor damage to kutcha roads.
- Possibilities of damage to vulnerable structure.
- Localized Landslides/Mudslides/landslips/mud slips/land sinks/mud sinks.
- Damage to horticulture and standing crops in some areas due to inundation.
- It may lead to riverine flooding in some river catchments (for riverine flooding please visit Web page of CWC)

**(v) Action Suggested**

- Fishermen are advised not to venture into Northeast & adjoining Eastcentral Arabian Sea and along & off Gujarat & adjoining Pakistan and north Maharashtra Coasts till 30<sup>th</sup> August.
- Judicious regulation of offshore/onshore Operations
- Judicious regulation of surface transports including railways and roadways.
- Check for traffic congestion on your route before leaving for your destination.
- Follow any traffic advisories that are issued in this regard.
- Avoid going to areas that face the water logging problems often.
- Avoid staying in vulnerable structure.

**(vi) Agromet advisories for Heavy Rainfall likely over various Madhya Pradesh, South Rajasthan, Gujarat State and North Maharashtra**

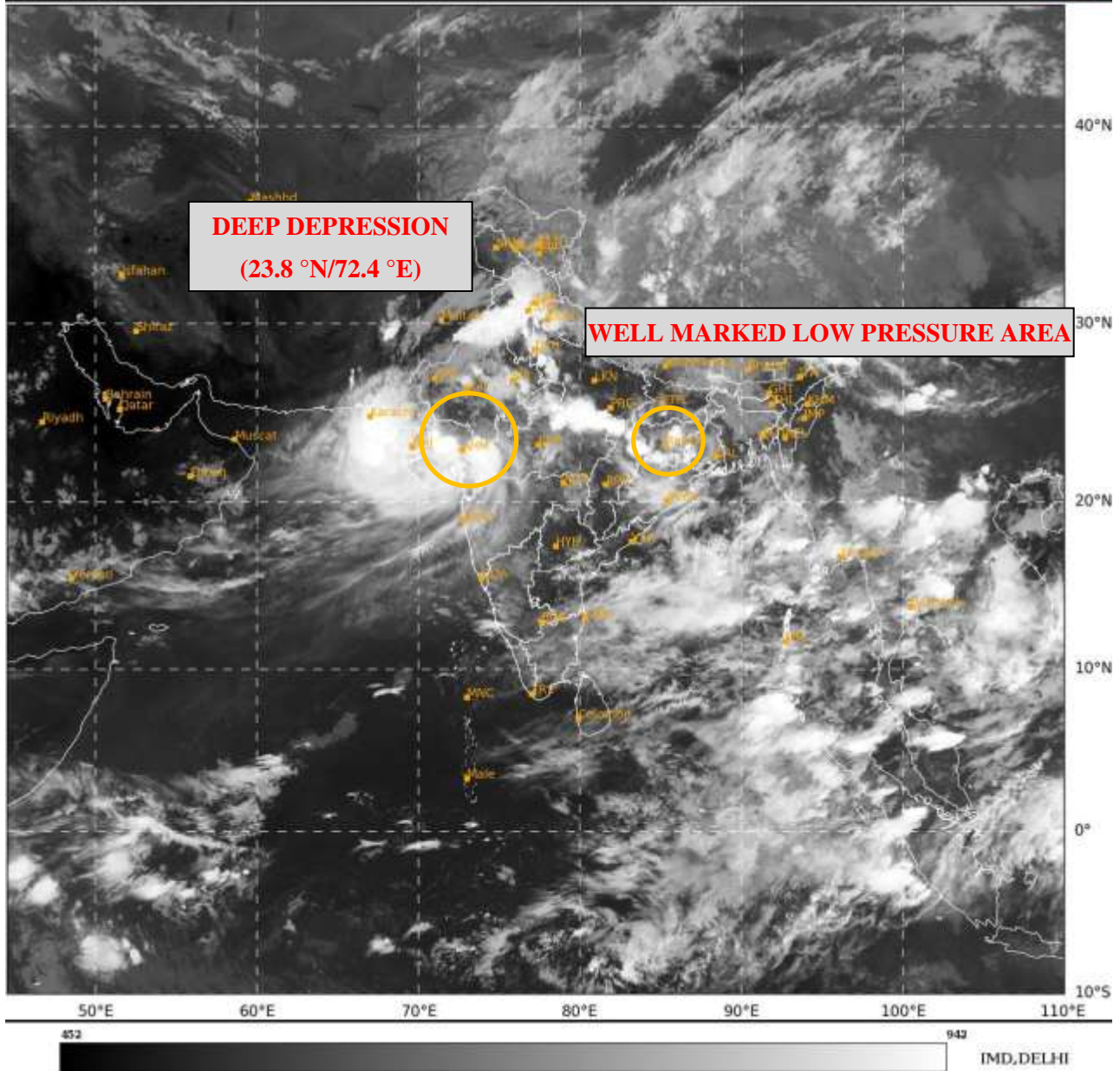
- Make provision for draining out excess water from crop fields to avoid water stagnation in Madhya Pradesh, South Rajasthan, Gujarat State and North Maharashtra.
- Provide mechanical support to horticultural crops and staking to vegetables.

Significant Rainfall (in cm) recorded during 0830-2330 hrs IST of 26.08.2024 is placed at Annexure-1.

**Next bulletin will be issued at 0830 hours IST of today, the 27<sup>th</sup> August, 2024.**

**(Dr. Shashi Kant)**  
**Scientist D, Cyclone Warning, New Delhi**

*Copy to: ACWC Kolkata/ACWC Mumbai/RMC Mumbai/CWC Ahmedabad/MC Jaipur/RMC, Nagpur/MC, Bhopal//CWC Bhubaneswar/MC, Goa/MC, Ranchi*





**OBSERVED AND FORECAST TRACK OF DEEP DEPRESSION OVER NORTH GUJARAT  
BASED ON 1800 UTC (2330 IST) OF 26<sup>TH</sup> AUGUST, 2024.**



DATE/TIME IN UTC

IST=UTC + 0530

L: LOW PRESSURE AREA

WML: WELL MARKED LOW PRESSURE AREA

D: DEPRESSION (17-27 KT)

DD: DEEP DEPRESSION (28-33 KT)

CS: CYCLONIC STORM (34-47 KT)

SCS: SEVERE CYCLONIC STORM (48-63KT)

VSCS: VERY SEVERE CYCLONIC STORM (64-89 KT)

ESCS: EXTREMELY SEVERE CYCLONIC STORM (90-119 KT)

SuCS: SUPER CYCLONIC STORM (≥ 120 KT)



LESS THAN 34 KT



34-47 KT



≥ 48 KT



OBSERVED TRACK

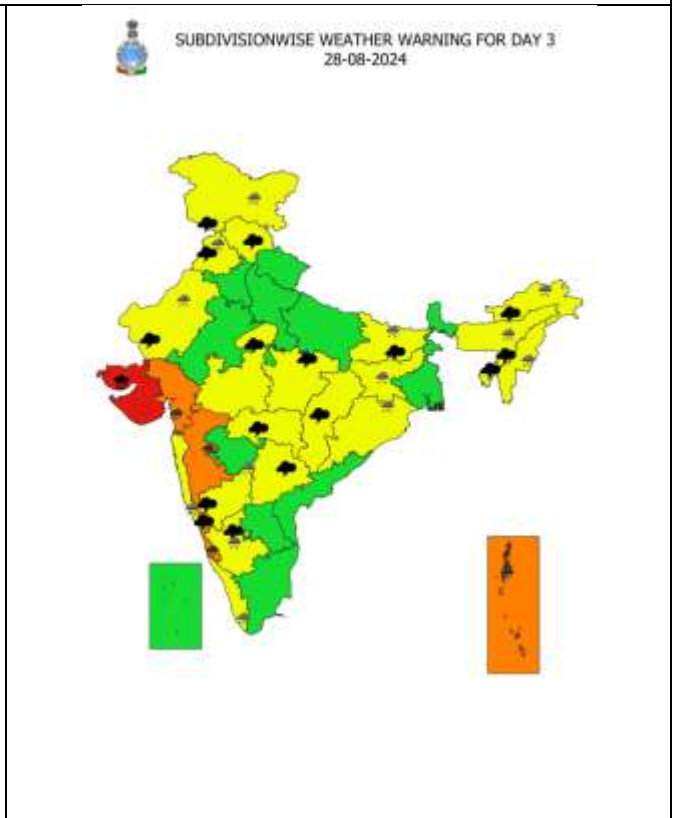
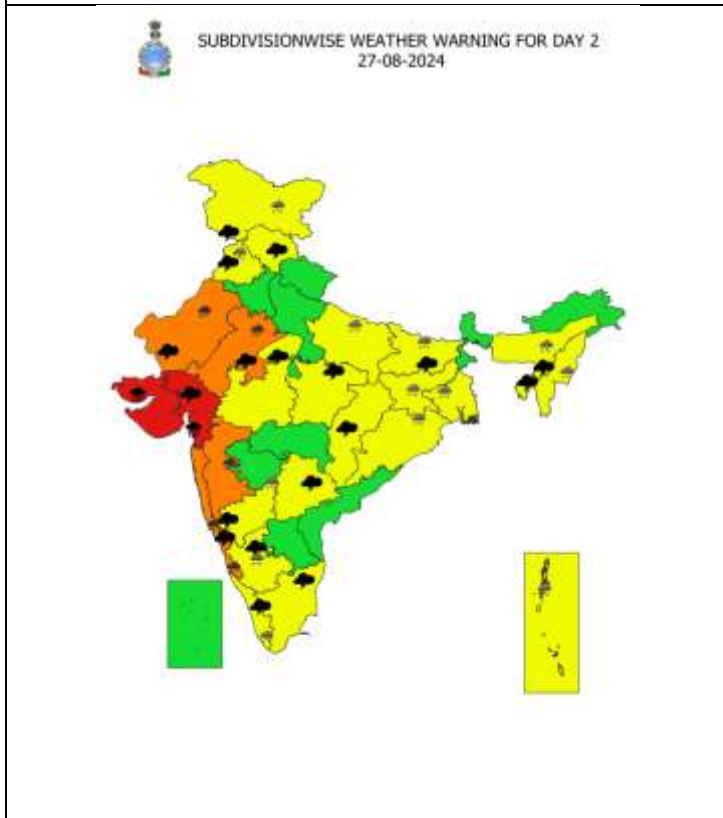
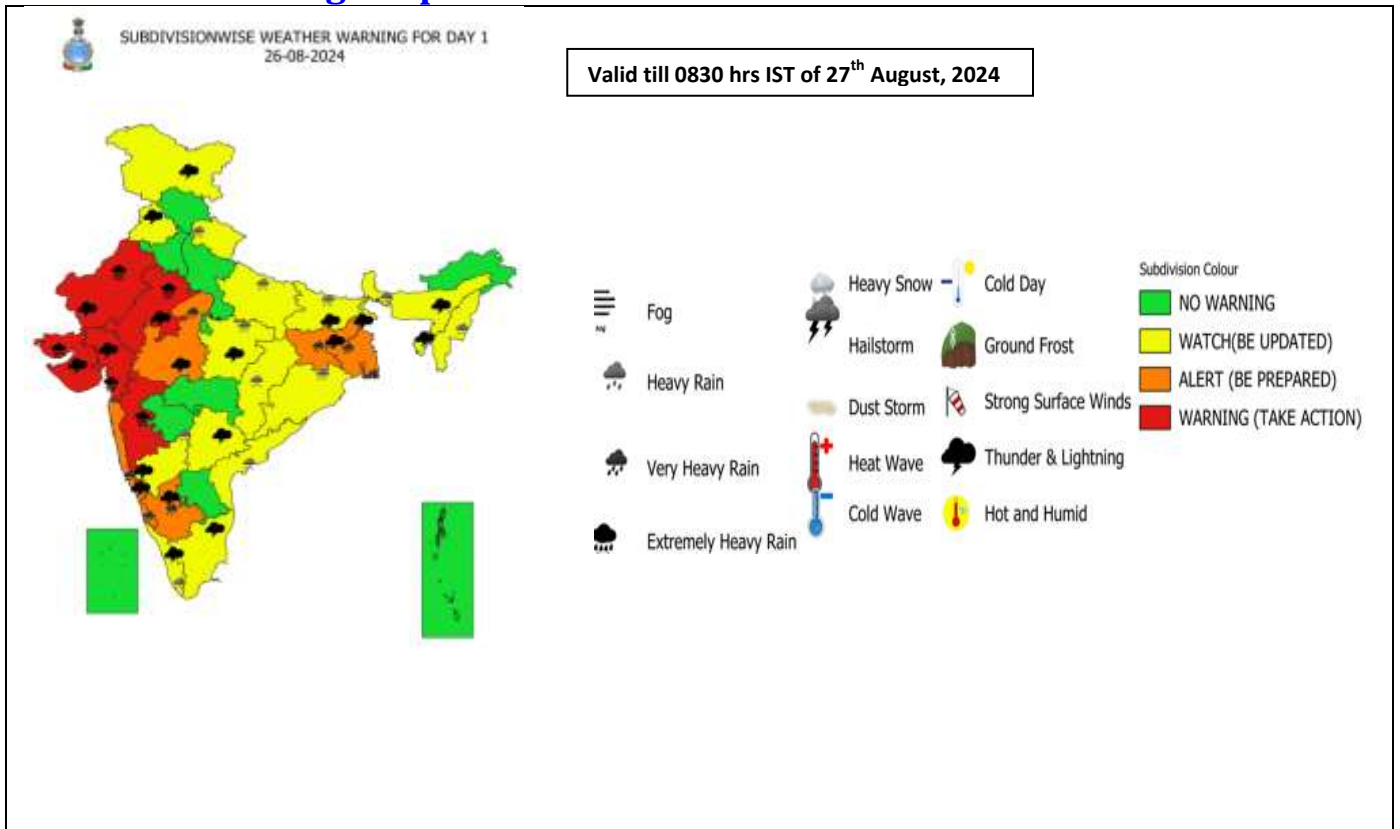


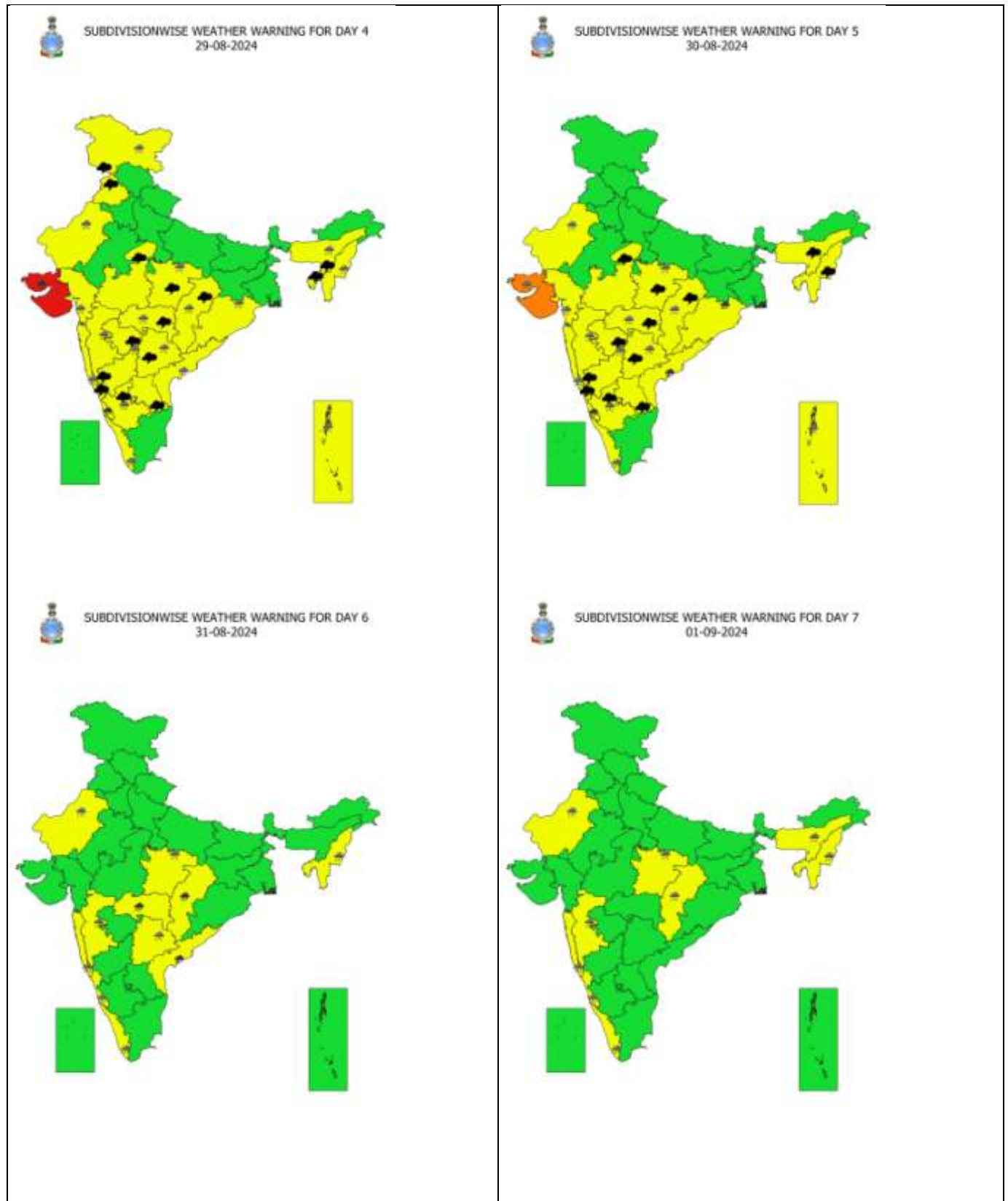
FORECAST TRACK



CONE OF UNCERTAINTY

# Weather Warning Graphics

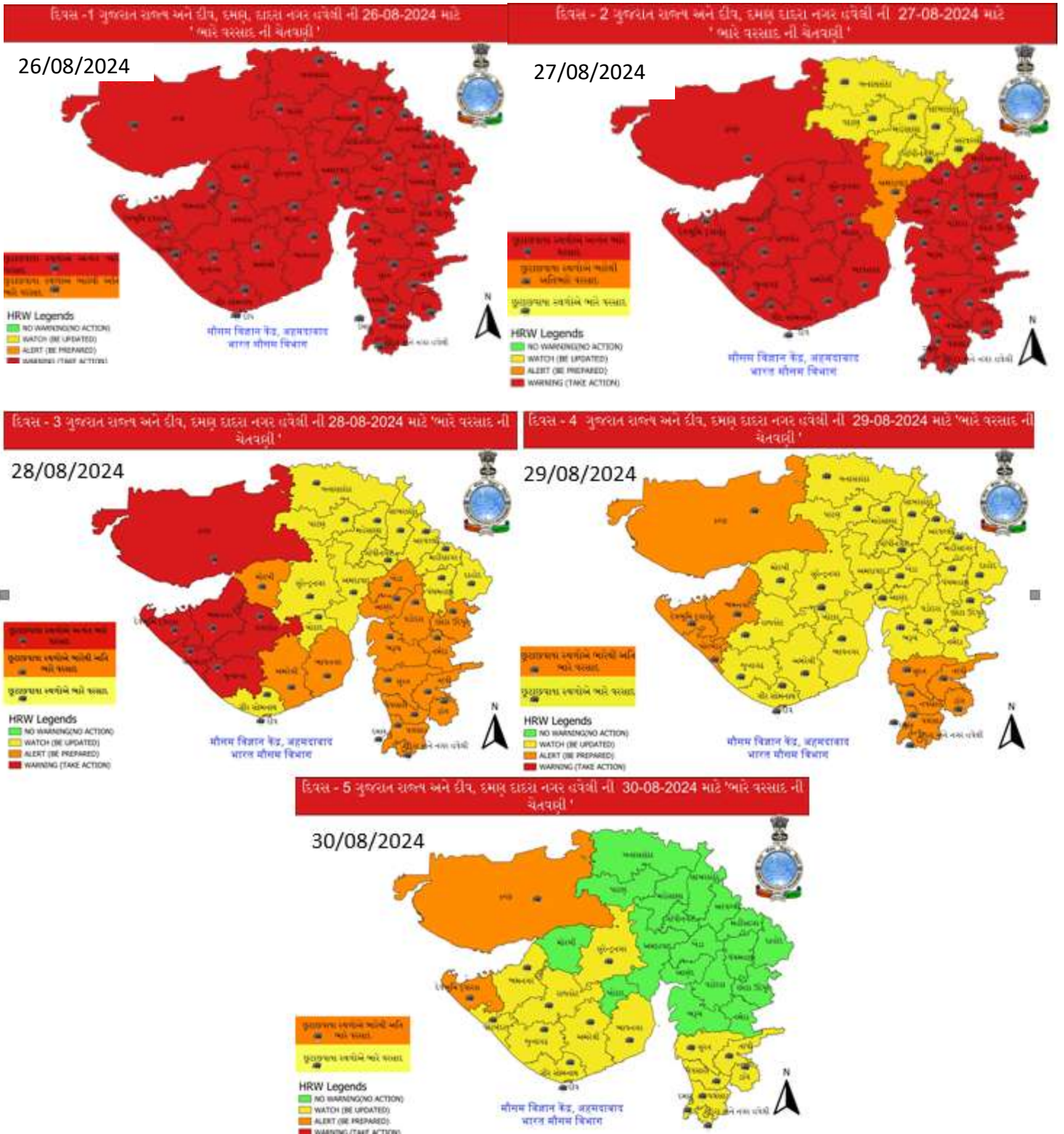


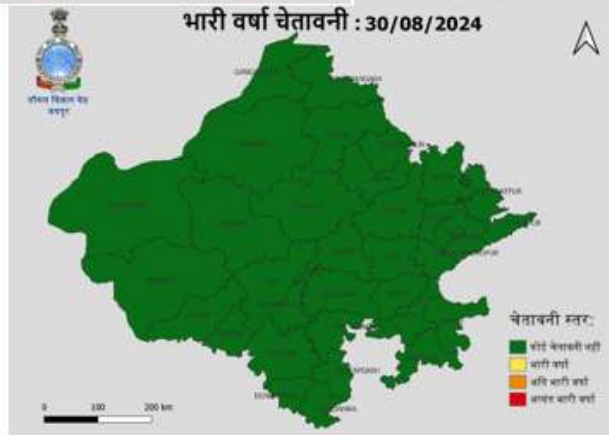
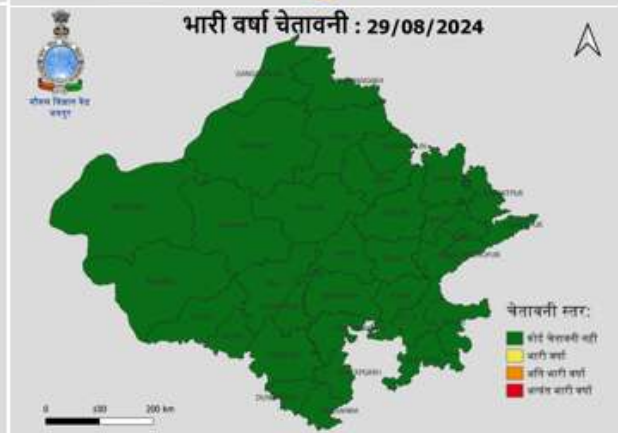
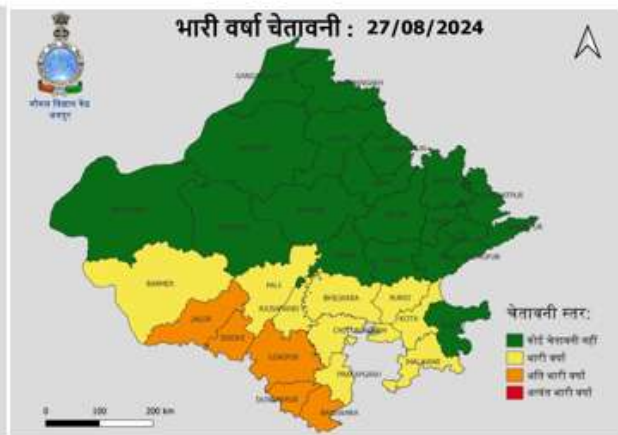
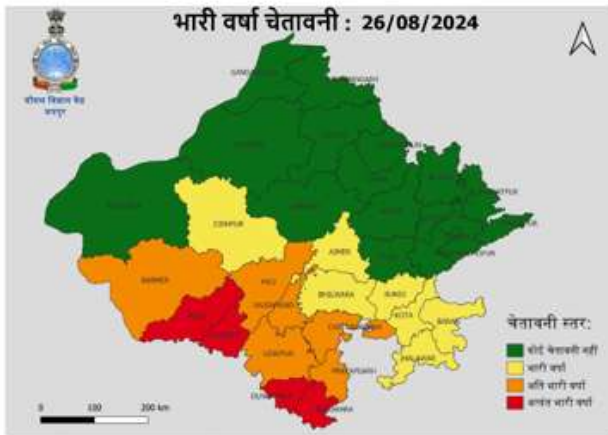


- Action may be taken based on **ORANGE AND RED** COLOUR warnings.
- Vulnerable regions likely urban and hilly areas action may be initiated for heavy rainfall warning.
- As the lead period increases forecast accuracy decreases.

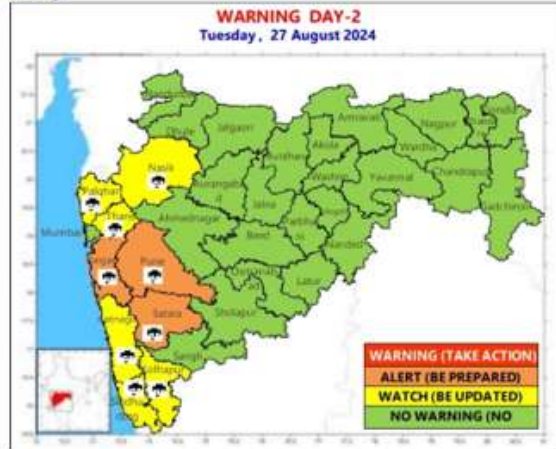
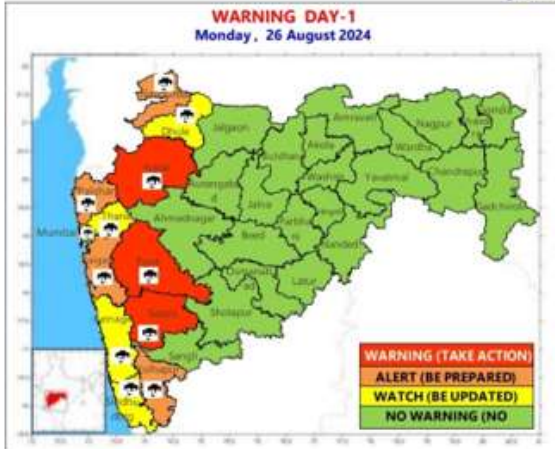


# District wise Warning Graphics

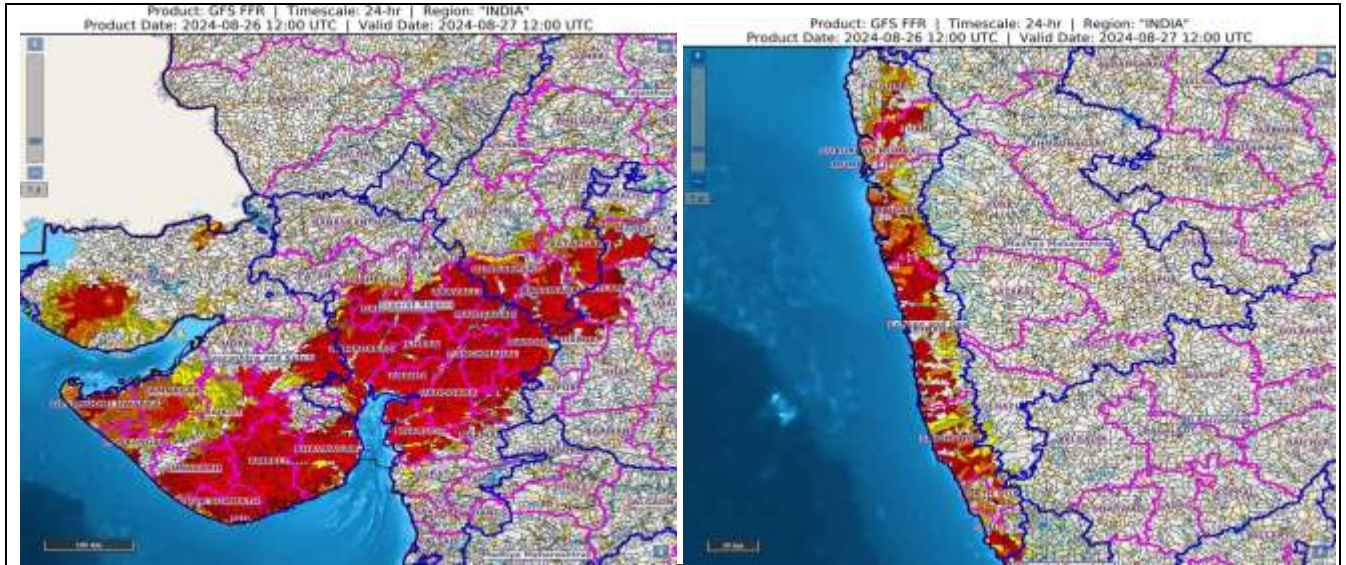




(WARNING)



## Flash Flood Guidance



### Flash Flood Risk

**High Risk (Take Action)**

**Moderate Risk (Be Prepared)**

**Low Risk (Be Updated)**

### 24 hours Outlook for the Flash Flood Risk (FFR) till 1730 IST of 27-08-2024 :

High flash flood risk likely over few watersheds & neighbourhoods of following Met Sub-divisions during next 24 hours.

**East Rajasthan** - Banswara, Dungarpur, Pratapgarh and Udaipur districts. West Madhya Pradesh - Alirajpur, Jhabua, Mandasaur, Nimach and Ratlam districts.

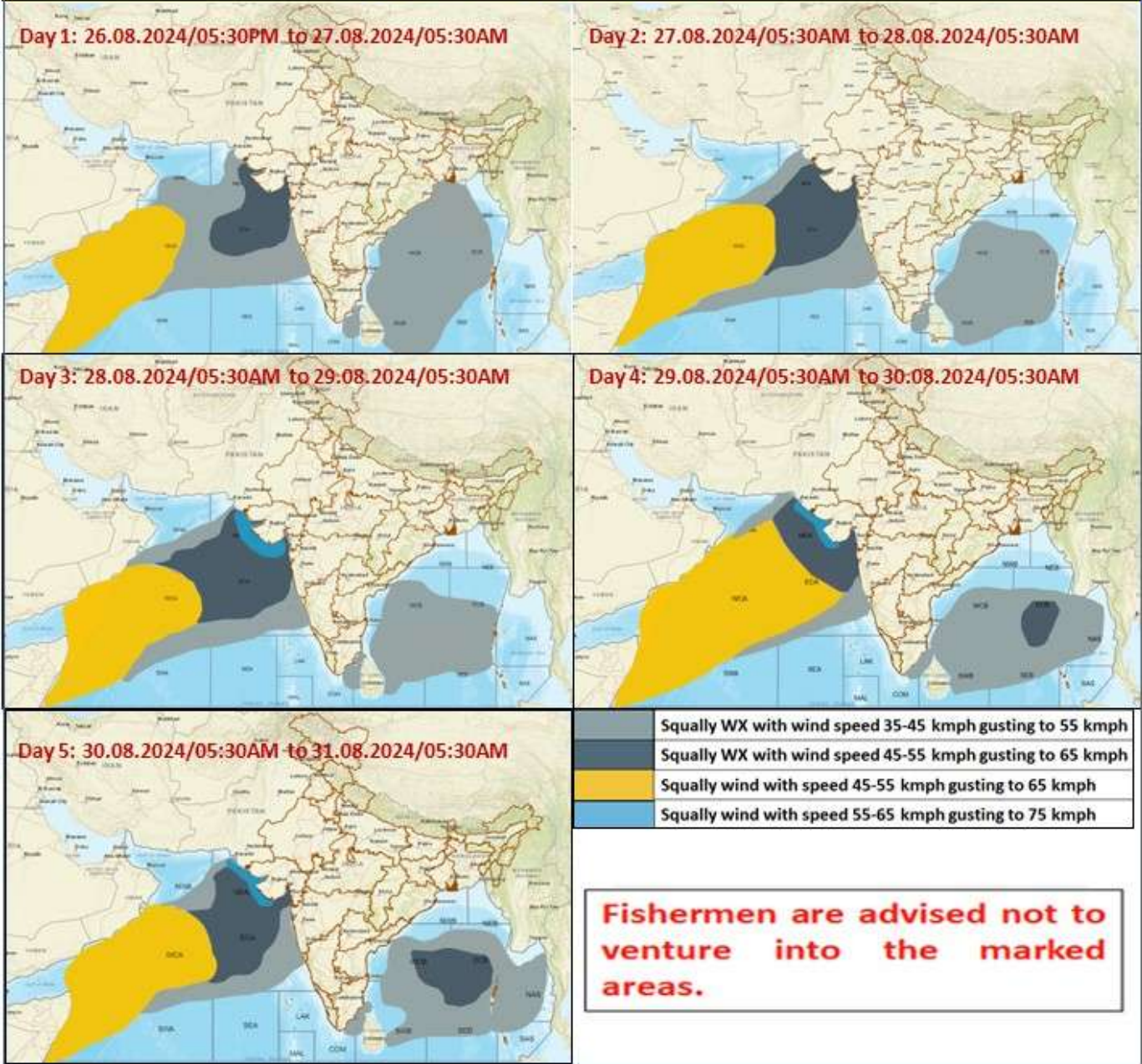
**Gujarat Region** - Ahmadabad, Anand, Aravalli, Bharuch, Chhota Udepur, Dahod, Gandhinagar, Khera, Mahesana, Mahisagar, Narmada, Panchmahal, Sabar Kantha and Vadodara districts.

**Saurashtra & Kutch** - Amreli, Bhavnagar, Botad, Devbhoomi Dwarka, Diu, Gir Somnath, Jamnagar, Junagarh, Porbandar, Rajkot, Surendranagar, Morbi and Kachchh districts.

**Konkan & Goa** - North Goa, South Goa, Mumbai City, Palghar, Raigarh, Ratnagiri, Sindhudurg, Suburban Mumbai and Thane districts.

Surface runoff/ Inundation may occur at some fully saturated soils & low-lying areas over Area of Concern (AoC) as shown in map due to expected rainfall occurrence in next 24 hours.

## Fishermen Warning Graphics



## ANNEXURE I

### Significant Rainfall (in cm) recorded over Gujarat state during 0830-2330 hrs IST of 26.08.2024 (in mm):

#### IMD stations data:

Ahmedabad (42647)	100 mm
Vadodara (42748)	276 mm
Surat (42840)	016 mm
Rajkot (42737)	104 mm
Porbandar (42830)	021mm
Dwarka (42731)	050 mm
Okha (42730)	058 mm
Bhuj (42634)	082 mm
Naliya (42631)	074 mm

#### State Government Data:

DISTRICT	TALUKA	RAINFALL
VADODARA	Padra	300
PANCHMAHALS	Morwa (Hadaf)	296
ANAND	Borsad	287
VADODARA	Vadodara	284
KHEDA	Nadiad	260
ANAND	Khambhat	253
ANAND	Anand	246
PANCHMAHALS	Godhra	236
ANAND	Tarapur	222
MORBI	Tankara	219
KACHCHH	Nakhatrana	218
KACHCHH	Mandvi (KACHCHH)	205
KHEDA	Vaso	197
MORBI	Morbi	190
ANAND	Sojitra	190
ANAND	Petlad	178
PANCHMAHALS	Shehera	175
KHEDA	Galteshwar	173
PANCHMAHALS	Halol	173
PANCHMAHALS	Jambughoda	170
DAHOD	Limkheda	165
PANCHMAHALS	Ghoghamba	164
KHEDA	Mahudha	159
ANAND	Umreth	155
KHEDA	Mehmedabad	154
AHMEDABAD	Dholka	152
MORBI	Wankaner	150
DANGS	Vaghai	150
KHEDA	Kheda	148
MAHISAGAR	Santrampur	148
DAHOD	Singvad	147
VADODARA	Desar	146
KHEDA	Matar	143
DAHOD	Fatepura	142
ANAND	Anklav	136
VADODARA	Savli	129
MAHISAGAR	Balasinor	123
AHMEDABAD	Daskroi	122
DANGS	Subir	120
AHMEDABAD	Ahmedabad City	120
DANGS	Dang-Ahwa	116
PANCHMAHALS	Kalol	113
VADODARA	Vaghodia	111
JAMNAGAR	Jodiya	106
CHHOTAUDEPUR	Chhotaudepur	106
KHEDA	Kathlal	104
DAHOD	Sanjeli	103
SURENDRANAGAR	Thangadh	102
AHMEDABAD	Dhandhuka	102